

## Materials Needed

- Brown paper, at least 4 feet in height, cut to look like a tree trunk with limbs
- Green paper, cut to look like peach leaves
- Peach Blackline Masters, include one set per child (see Booklet 1, Tool Shed Resources, page 78)
- Drawing of peaches (See Booklet 1, Tool Shed Resources, page 69)
- Crayons, markers, or colored pencils (Yellow-green, orange, and red)
- Blunt-tip scissors
- Reusable adhesive or double stick tape

## What To Do Ahead of Time

- Create a paper peach tree and attach to a wall.
- Copy and cut out, from white paper, one peach blossom per child.
- Copy and cut out, from yellow paper, one set of peaches (2", 3", 4") per child
- Organize the supplies.
- Plan to serve peaches in some form at snack or mealtime (see Booklet 1, Tool Shed Resources, Ten Terrific Ways..., page 48).

## B2: Make and Grow a Pretend Peach Tree

The children make a pretend peach tree and learn about the growing stages of peaches.

**Note:** As described, this is a weeklong activity. Should you wish to complete this activity in one day, make the materials at the beginning of the day. Follow the steps to Grow a Pretend Peach Tree throughout the day and end with harvesting peaches at the end of the day. See Grow a Pretend Peach Tree Daily Steps at the end of the activity to complete on a single day.

## Objectives

The children will be able to:

- Experience making a pretend peach tree;
- Describe the resources needed to grow peaches.

**Option:** Paint a tree trunk, limbs, and leaves on a large piece of white paper, at least 4 feet in height.





**Activity Length:**  
**15 minutes**  
**to prepare**  
**materials; 5**  
**minutes a day**  
**to simulate how**  
**peaches grow**

## The Activity

- Have each child seated at the table(s), near the supplies.
- Tell the children that peaches grow from seeds called peach pits that are planted in the ground. The pit needs soil, water, sun, and time to grow into a peach tree.
- When the tree is at least 3 years old, the tree grows flowers called peach blossoms every spring. The blossoms fall away and peaches grow where the flowers were. At first the peaches are small, hard, and slightly yellow-green with some orange in color.
- By the middle of summer, the peaches have grown larger, are changing in color to have less green and more orange and red.
- By the end of the summer, the large peaches on the tree are soft, round, and creamy yellow with orange-red in color. Once the peaches are ripe, they are picked and sent to stores or farmers' markets. That is where we buy peaches to take home and eat.
- Tell the children they are going to make a pretend peach tree. Show drawing of peaches growing on a tree.
- Ask the children to finish adding color to the yellow paper peaches. The smallest peach (2" size) is the least ripe; it appears yellow-green with some orange. The medium size peach (3" size) is growing and ripening; it appears to have a little yellow-green, more orange and the beginning of red tones. The largest peach (4" size) is ripe and ready to pick; it is yellow-orange with more red. Help any children who need assistance.
- Have the children cut each colored peach from the sheet. Help any children who need assistance. Have each child write his or her name on the back of each of the three peaches; assist any children needing help.

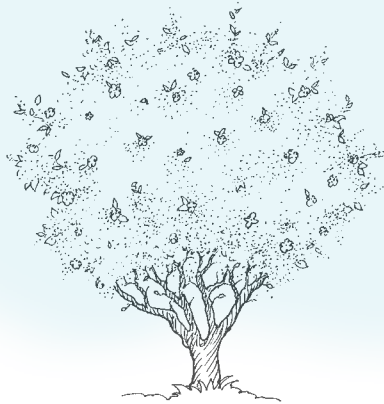


### Connection to Garden Art and Crafts

Get double duty from the Make a Pretend Peach Tree Activity—save the large peach to use in the Tasty Acres Mobile and add all the fruits and vegetables featured at Tasty Acres Farm (see Booklet 1, Garden Art and Crafts Section, Tasty Acres Mobile, page 31).

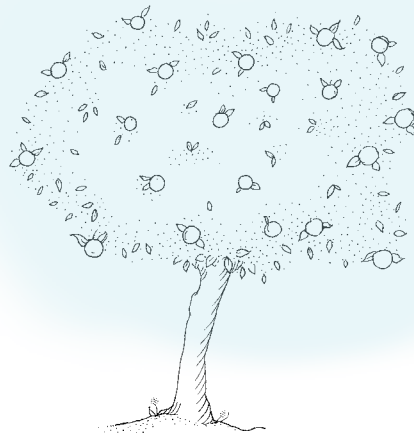
# Grow a Pretend Peach Tree...Daily Steps

- **Day 1:** Help the children attach a peach blossom to the tree with reusable adhesive or tape. As the blossoms are added, remind the children that the tree has grown for 3 years before it produces blossoms.



- **Day 2:** Remove the blossoms and place the 2" peaches in the blossom positions. As the small peaches are added, remind the children that peaches start to grow where the blossoms were located on the tree. Talk with the children about the resources needed for the tree to grow peaches (water, sun, soil, and time).

- **Day 3:** Replace the 2" peaches with the 3" ones. As the medium size peaches are added, remind the children that peaches grow larger during the summer on the tree. Talk with the children about the resources needed for the tree to grow peaches (water, sun, soil, and time).



- **Day 4:** Replace the 3" peaches with the 4" ones. As the large size peaches are added, remind the children that after peaches reach their full size, they ripen on the tree. Talk with the children about the resources needed for the tree to grow peaches (water, sun, soil, and time).



- **Day 5:** Continue the lesson by celebrating with a pretend harvest of the 4" peaches from the tree. Talk with the children about the resources needed for the tree to grow peaches (water, sun, soil, and time).

