



**MASSACHUSETTS
FARM TO SCHOOL
INSTITUTE**

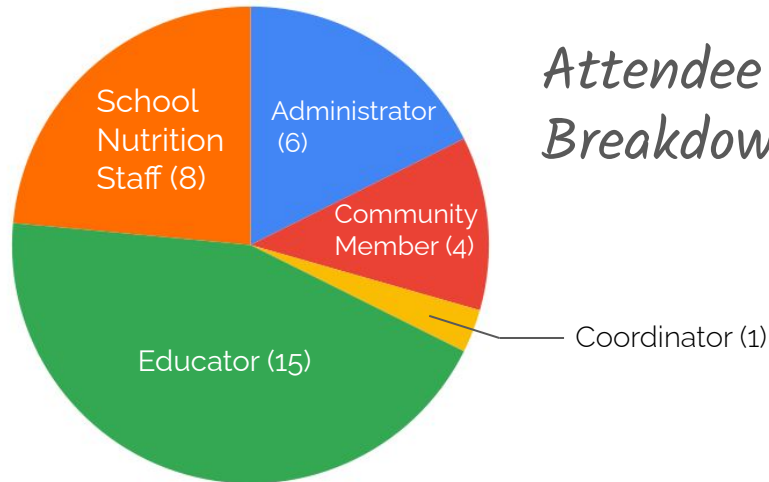
October 1st & 2nd, 2021
Fall Kick-Off Retreat



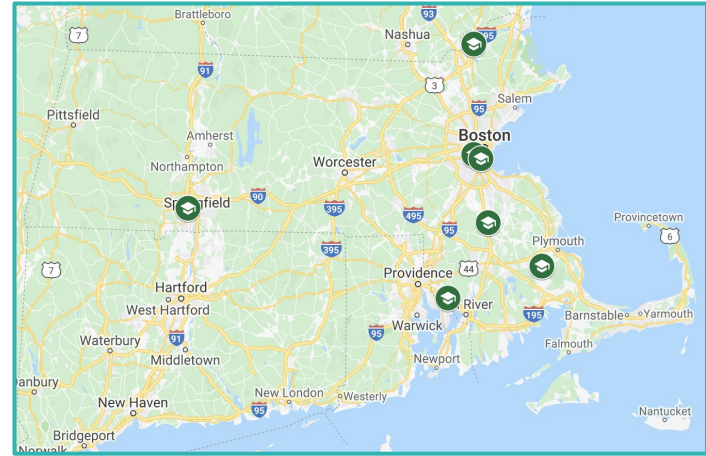
WHO IS PARTICIPATING?

School Teams

- Bridge Boston Charter School
- Brockton High School
- Public Schools of Brookline
- Carver Middle & High School
- Hill View Montessori Charter School
- West Springfield High School



*Attendee
Breakdown*



WHO IS MASSACHUSETTS FARM TO SCHOOL?

WHAT WE DO & WHO WE ARE

Mission

Mass. Farm to School strengthens local farms and fisheries and promotes healthy communities by increasing local food purchasing and education at schools.

Vision

All Massachusetts schools consistently teach about and serve local foods, supporting vibrant local farming and fishing communities and healthy schools, students and families.



WHAT IS THE MASS. FARM TO SCHOOL INSTITUTE?

A year-long professional learning opportunity for school (or school district) teams from across Massachusetts.

Key Elements of the Institute:

- Whole School Teams
- Action Planning
- Year-long coaching
- Peer Networking
- Capacity Building



Photo courtesy of Springfield Public Schools

PARTNERSHIP WITH VERMONT FEED

VT FEED is a project of NOFA-VT and Shelburne Farms

Founders of the Northeast Farm to School Institute



THE 3 C's APPROACH

IN THE CLASSROOM

Farm to School education provides a real-life context for learning across all disciplines.

IN THE CAFETERIA

Farm to school programs strive to show that school nutrition and the cafeteria is integral to the school day and the education of the whole student.

IN THE COMMUNITY

Farm to school strengthens the community and local economy.



PROGRAM REQUIREMENTS

BEFORE THE FALL RETREAT

- Coach and Teams Meet to go over materials, roles, and rubric

DURING THE 21-22 SCHOOL YEAR

- Complete action items from Year 1 Action Plan
- Schedule regular check-ins with team members and coach
- Attend Extended Professional Development Workshops throughout the year

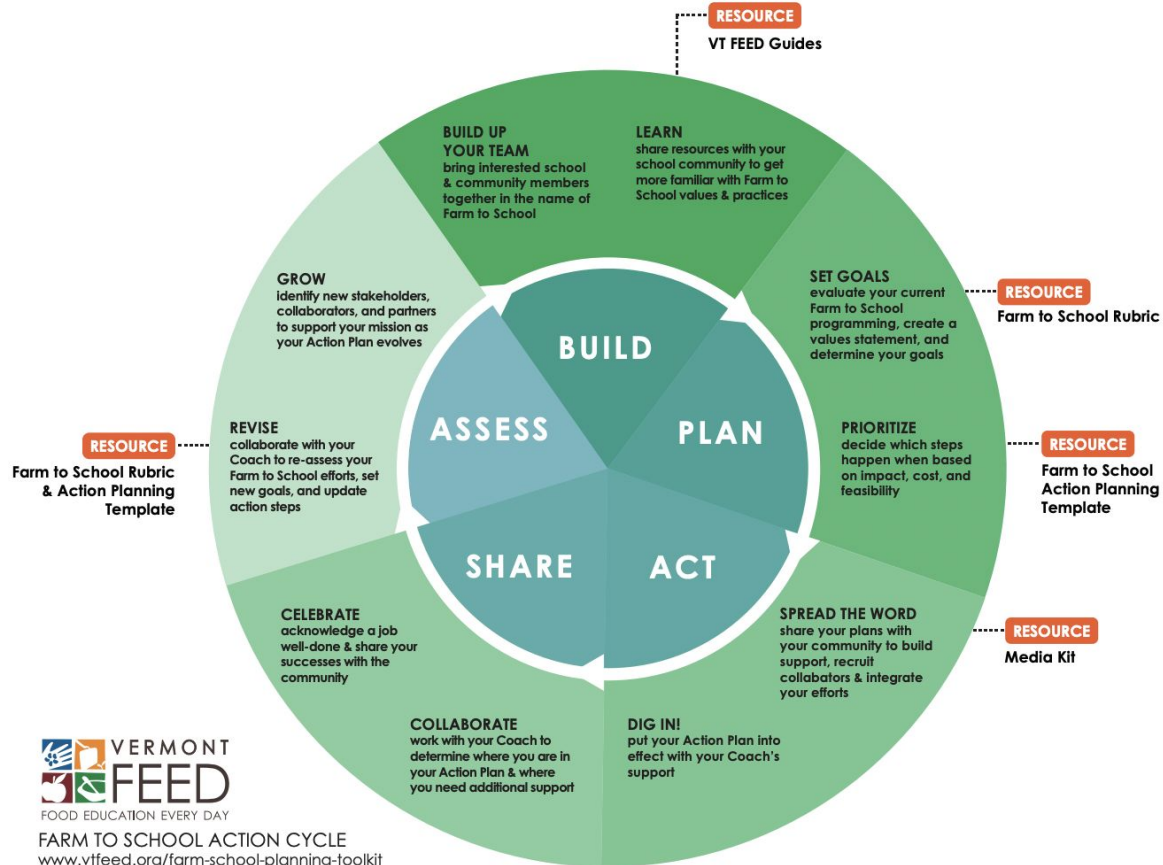
BY THE END OF FALL RETREAT

- Complete Action Plan with values statement
- Complete individual Fall Retreat evaluations

BY THE END OF INSTITUTE

- Complete written share-out of FTS activities
- Attend in-person end of year gathering

YEAR-LONG ACTION PLANNING



KEY RESOURCES

- *MASS. FARM TO SCHOOL INSTITUTE WEBSITE*

Your one-stop shop for everything you need for the fall kickoff and throughout the year

- *YOUR TEAM'S GOOGLE DRIVE FOLDER*

Where you'll keep all your action planning documents & other resources

- *VT FEED PLANNING TOOLKIT*

Tools and templates for planning and outreach



BI-MONTHLY PEER NETWORKING SESSIONS

EDUCATION

Second Tuesday of the month from 4-5pm (in November, January & March)

Dates: November 9th, January 11th & March 8th

SCHOOL NUTRITION

Third Wednesday of the month from 2-3pm (in November, January & March)

Dates: November 17th, January 19th, March 16th

PROGRAM ADMINISTRATION, PARTNERSHIPS & SUSTAINABILITY

First Thursday of the month from 10-11am (in November, January & March)

Dates: November 4th, January 6th, March 3rd

Group Agreements*

- ❖ In every chair, a leader and a learner
- ❖ Take space/Make space
- ❖ Practice examining & disrupting racially biased systems, perspectives, and processes
- ❖ Put relationships first
- ❖ Keep focused on our common goals
- ❖ Be present and stay engaged

**These agreements are selected from National Farm to School Network*



Artwork by Favianna Rodriguez @studio@favianna.com

FRIDAY'S AGENDA

9:00 AM - 9:30 AM - Welcome & Overview

9:30 AM - 10:10 AM - Keynote - Rev. Mariama White-Hammond

10:10 AM - 10:30 AM - Keynote reflection

10:30 AM - 12:00 PM - Team Time: Block 1 *

(Goals: Develop values statement, begin action planning if time allows)

12:00 PM - 12:45 PM - Lunch

1:00 PM - 2:00 PM - Panel discussion

2:00 PM - 2:30 PM - Reconvene and Close with Cohort

2:30 PM - 3:00 PM - Individual Teams wrap up with coach, prep for Saturday

KEYNOTE SPEAKER: REV. MARIAMA WHITE-HAMMOND

Reverend Mariama White-Hammond is the Chief of Environment, Energy, and Open Space for the City of Boston. In this role, Rev. White-Hammond is responsible for leading the Cabinet in achieving its mission of enhancing environmental justice and quality of life in Boston by protecting air, water, climate, and land resources, as well as preserving and improving the integrity of Boston's architectural and historic resources.

Rev. White-Hammond has extensive background in embedding equity and environmental justice into Boston's communities. She is the founding pastor of New Roots AME Church in Dorchester, a multi-racial, multi-class community. In this work, Rev. White-Hammond utilizes an intersectional lens to connect ecology, immigration, climate change, energy policy and economic justice. She is a fellow with the Green Justice Coalition, which brings together eight social/environmental justice groups from around Massachusetts. Rev. White-Hammond is a public speaker throughout the nation and was a leader for both the 2017 Boston Women's March and Boston People's Climate Mobilization.

Creating a Farm to School Values Statement

- Look for points of alignment and lean into points of tension
- Consider existing school priorities or mission statements
- Brainstorm words, phrases and construct a sentence or two that expresses your shared values
- The basis for setting and measuring your Farm to School goals and actions



As you listened to the keynote address:

- 1) What stood out to you as it relates to your own values?
- 2) What stood out to you as it relates to the creation of your program's value statement?

PANELIST DISCUSSION

HOW THE PANELISTS HAVE BROUGHT FARM TO SCHOOL TO LIFE!



Liz Green
Executive Director,
Three Sisters
Garden Project



*Mellissa
Honeywood, RD*
Director of Food
and Nutrition
Services,
Cambridge Public
Schools



Rebecca Busansky
Member,
Northampton
School Committee
& Program
Manager, Franklin
Co. Community
Development Corp.



Amber Tulloch
4th Grade Teacher,
Hawlemont
Elementary School
& Coordinator, HAY
Program
(Hawlemont,
Agriculture, & You)



Jennifer Ferland
Executive Director
of Strategic
Initiatives &
Partnerships, New
Bedford Public
Schools

DAY 1 CONCLUSION

Looking Ahead to Saturday

- A full day of interactive workshops, networking, and team time at Wright-Locke Farm
- Registration: 8:30-9:15 (see full agenda on the google site)
- Crowdpass Reminder

Parking Map



DAY 1 CONCLUSION

Farm Map

