

Fumidil-B Fumagillin Powder Use, Instructions & Drug Facts

Description:

Fumidil-B is a water-soluble preparation containing Bicyclohexylammonium Fumagillin, equivalent to 20 mg Fumagillin base per gram of powder.

Fumidil-B has a high specific action against *Nosema apis.*, a microscopic, single-celled parasite which causes Nosema disease in honey bees. It acts on the multiplying, disease producing parasite in the gut and is not effective against the spores. To eradicate the continuing supply of parasites, Fumidil-B must be provided over a period of several weeks.

Directions:

Fumidil-B should be dissolved in water and then added to syrup. For best results, heat the required amount of water to 95-122°F, then remove the heat source and add the Fumidil-B and the sugar in that order.

Do not add Fumidil-B to syrup over 86°F. Feed the medicated syrup within 24 hours. To prepare this concentration of medicated syrup, use the following chart.

Water +Sugar =Syrup +Fumidil-B

48.5 gallons +800.7 lbs = 110 gallons 500 gram bottle

0.44 gallons +7.3 lbs = 1 gallon 4.5 grams

Fall Feeding Medicated Syrup

2 gallons for each 2-chamber colony (approximately 30,000 bees) 1 gallon for each 1-chamber colony (approximately 12,000 bees)

¾ gallon for each 5-frame colony (approximately 12,000 bees)

Feed additional unmedicated syrup to desired colony weight for wintering.

Spring Feeding Medicated Syrup

1 gallon for each 2-chamber colony (approximately 30,000 bees)

½ gallon for each 1-chamber colony (approximately 12,000 bees)

½ gallon for each 5-frame colony (approximately 12,000 bees) 1 gallon for each package colony

Feed additional unmedicated syrup to provide nourishment until nectar is available. Each package colony is best fed Fumidil-B immediately after installation.

Colonies used for package production should be fed medicated syrup as a principle food source for one month prior to shaking for market.

Heavily infested colonies that will no longer take in syrup may be sprayed directly onto the bees, frame by frame with 1:1 sugar syrup (one-part sugar to one-part water).

Warning:


Medicated syrup must not be fed immediately before or during the honey flow.

Storage Instructions:

Store below 77°F, protected from sunlight. Do not expose medicated syrup to sunlight.

100*35

Animal Use Only
FUMIDIL-B
 Oral powder *Fumagillin*



25g

Manufactured by
KBNP, INC.
 235-9 Chusaro, Sinam, Yesan, Chungnam, Korea
 www.kbnp.net

000000/191101
 86110-009-25

Composition(Each kg contains)
 Fumagillin bicyclohexylammonium
 ----- 20g(potency)

Indications
 Prevention and treatment of *Nosema apis*

Dosage and Administration

- Spring treatment:
 Administer a medicated syrup with the following composition.

Mix 25g of Fumidil-B per medicated syrup as below and administer 8 times with an interval of a week.

Colonies	Medicated syrup	Dosage
Over 8 colonies	25L	1L
4 to 7 colonies	18L	0.75L
3 colonies	12L	0.5L

1) Put into the water supply. (All of the bees can be treated at the same time)

2) Spray the package and the inner walls of the bee hive. (for severe infections)


- Autumn treatment:
 The autumn treatment must be done the same way as the spring treatment.

- For the breeding and mating stations of queen DC-097
 Mix 5g of Fumidil-B with 3kg of sugar paste
 - If *Nosema* spores remain in the colonies and bee hive, re-treatment is recommended in the spring and summer of the next year.

Storage
 Store in cool and dark place under 25°C.

Precautions

- Do not use immediately before or during honey flow period.
- Read and follow dosage and directions found on label.
- Keep out of reach of children and animals.
- Do not use the product if expired.
- For use by veterinarian's instruction and veterinary use only.



7 14854 16097 0

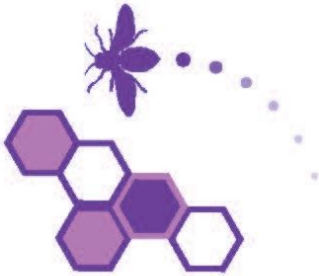
150*90

Animal Use Only

FUMIDIL-B

Oral powder
Fumagillin

500g



0000000/190705

Composition(Each kg contains)
Fumagillin bicyclohexylammonium
----- 20g(potency)

Indications

Prevention and treatment of Nosema apis

Dosage and Administration

- Spring treatment:

Administer a medicated syrup with the following composition.

Mix 25g of Fumidil-B per medicated syrup as below and administer 8 times with an interval of a week.

Colonies	Medicated syrup	Dosage
Over 8 colonies	25L	1L
4 to 7 colonies	18L	0.75L
3 colonies	12L	0.5L

1) Put into the water supply. (All of the bees can be treated at the same time)

2) Spray the package and the inner walls of the bee hive. (for severe infections)

- Autumn treatment:

The autumn treatment must be done the same way as the spring treatment.



Manufactured by

KBNP, INC.

235-9 Chusaro, Sinam, Yesan,
Chungnam, Korea
www.kbnp.net

LOT :

MFG :

EXP :

- For the breeding and mating stations of queen
Mix 5g of Fumidil-B with 3kg of sugar paste
- If Nosema spores remain in the colonies and bee hive, re-treatment is recommended in the spring and summer of the next year.

Storage

Store in cool and dark place under 25°C.

Precautions

- Do not use immediately before or during honey flow period
- Read and follow dosage and directions found on label.
- Keep out of reach of children and animals
- Do not use the product if expired.
- For use by veterinarian's instruction and veterinary use only.

